

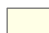
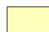
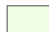
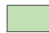




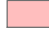


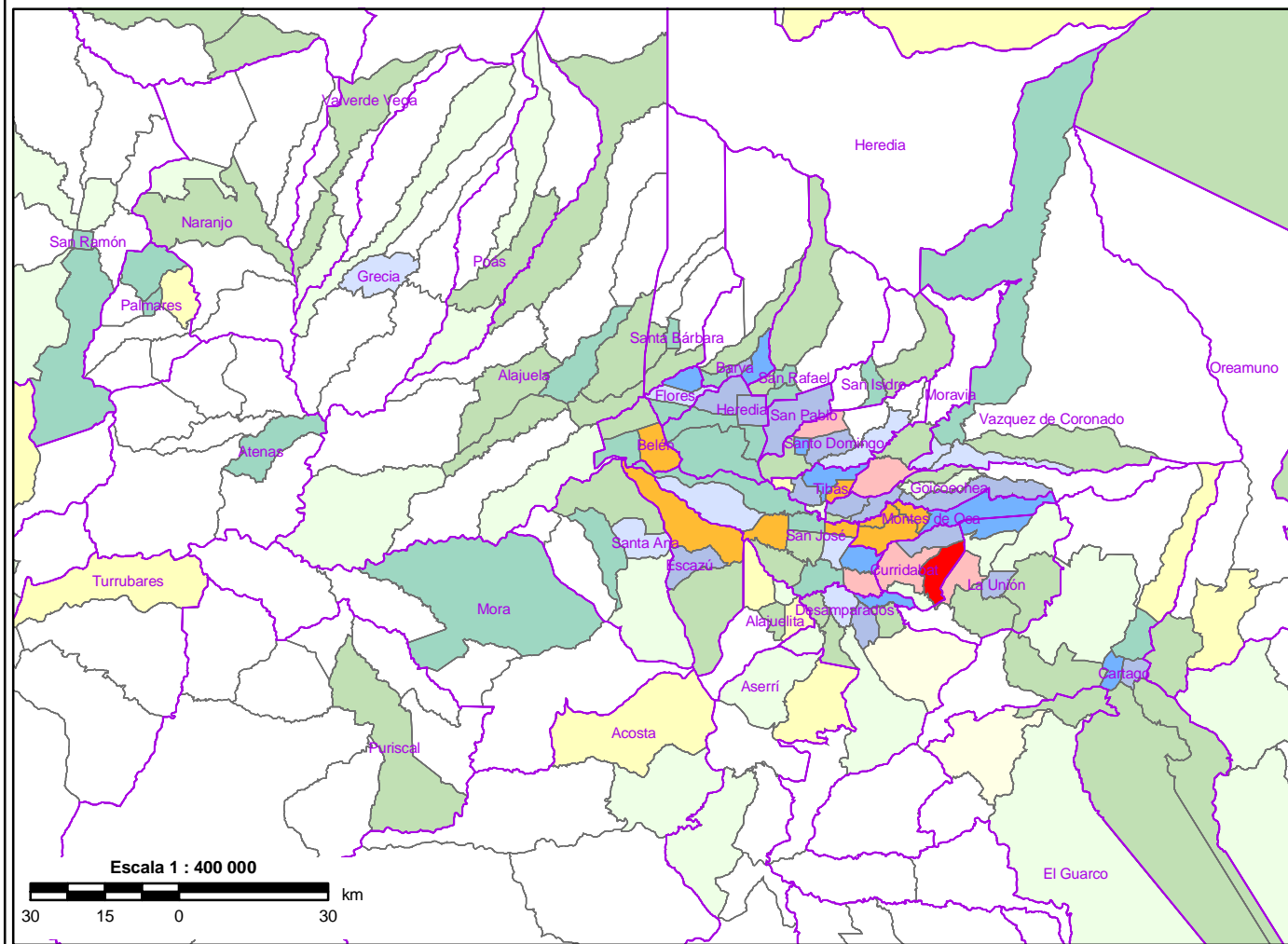
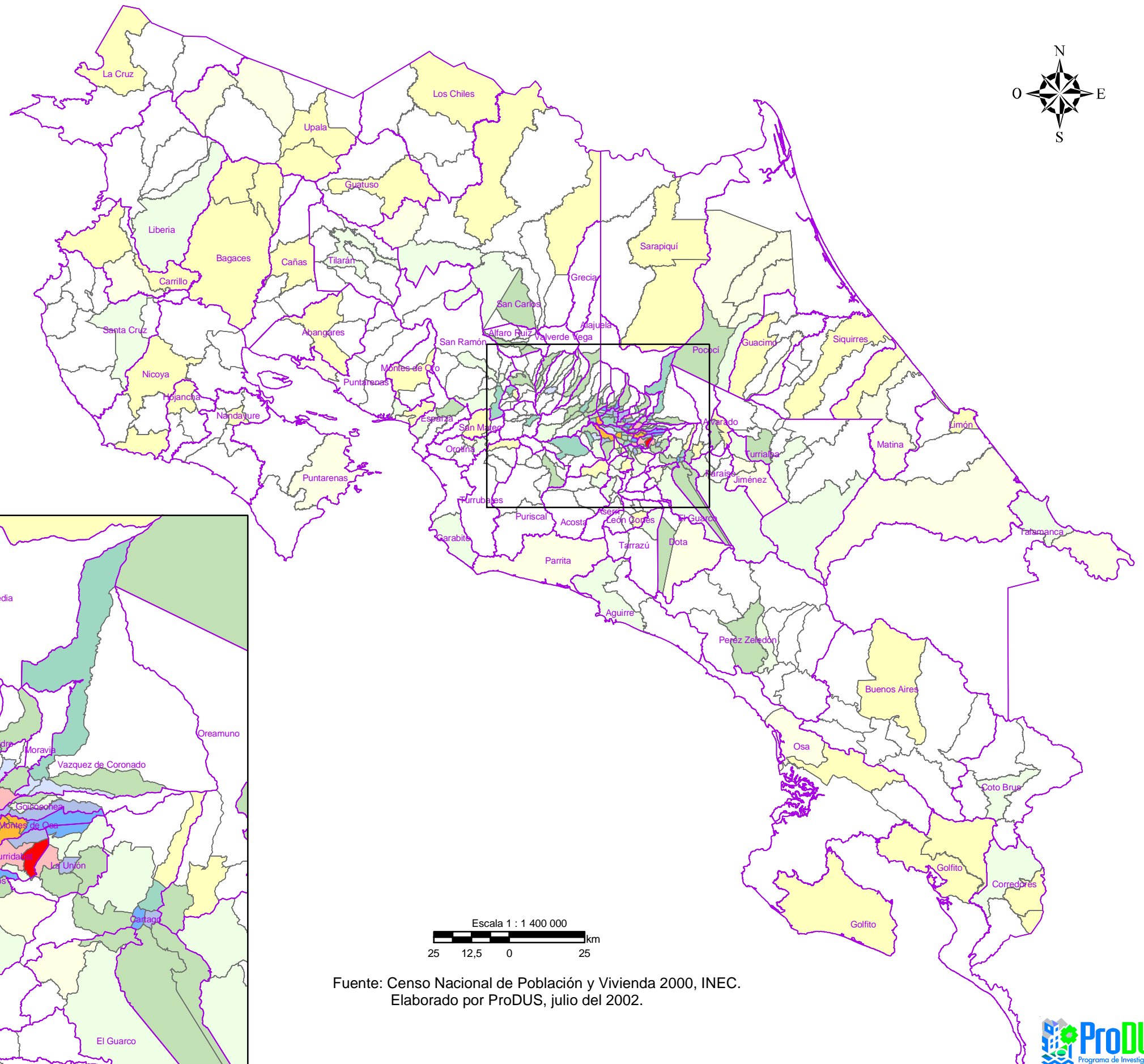
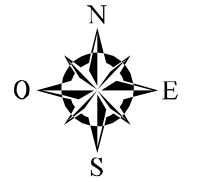


Mapa AH.4.a. Porcentaje de viviendas individuales con COMPUTADOR en las ÁREAS URBANAS de cada distrito para el año 2000

Simbología	
	Límite cantonal
	Distritos sin zonas urbanas
Porcentaje	Percentil
	0 - 10
	10 - 30
	30 - 50
	50 - 70
	70 - 80
	80 - 83,6
	83,6 - 90
	90 - 93,8
	93,8 - 96
	96 - 99,6
	100



Fuente: Censo Nacional de Población y Vivienda 2000, INEC.
Elaborado por ProDUS, julio del 2002.

